



ProImage... Comprehensive tools for the Newspaper Publishing Industry

ProImage NewsWay

ProImage NewsWay - the most robust flexible Newspaper workflow software that around. The flagship of ProImage products is the long proven and highly reliable NewsWay which boast the richest set of features in the newspaper arena.

ProImage NewsWay Lite

NewsWay Lite is an easy-to-use but comprehensive browser-based workflow solution for newspaper printing production applications using a single, pre-defined digital workflow.

ProImage TracWay

Using ProImages extensive interface experience, TracWay will automatically collate and monitor information from your existing production system, visually showing the status of edition, from pre-press to printing, every step of the way.

ProImage Spooler

ProImage Spooler will network enable most filmsetters and Computer to Plate equipment. Relying on the technologies developed by ProImage in interfacing to 3rd party imagesetters, ProImage Spooler will provide you with output capabilities on most available imagesetting equipment.



Expert Image Processing Services

We offer a range of expert services enabling you to derive maximum value from your investment.

- Initial audit of your imaging workflow
- Installation, fine-tuning and Expert Training
- Annual support contact including software updates, remote support and help desk
- Additional services such as Press Characterization
- PDF Implementation, and Image Delivery Improvement

More in the ProImage toolbox



NewsWay



NewsWay Lite



OnColor



OnColor ECO

Copyright © 2009 ProImage Ltd. All products referenced here in are acknowledged as trademarks or registered trademarks of their respective owners.

PROIMAGE



OnColor



Automatic, Intelligent Image Processing

making
complex
publishing
simple

Today's challenge in a newspaper environment is automating the imaging process, where images arrive from different sources with large variations in quality and consistency.

Proimage OnColor meets that challenge, offering you an intelligent, production-minded solution to guarantee that you can consistently publish the highest quality images.

➔ Exceptional Quality... Unsurpassed Productivity.

ProImage OnColor is the most versatile tool to assist picture production in the Newspaper Publishing environment. With high levels of flexibility, quality control and productivity.

Compatible with nearly any image format, it is the ideal solution for newspaper producers that receive image from a wide of sources.

With ProImage OnColor all you have to do is set your preferences, go to automatic mode and the software does the rest.

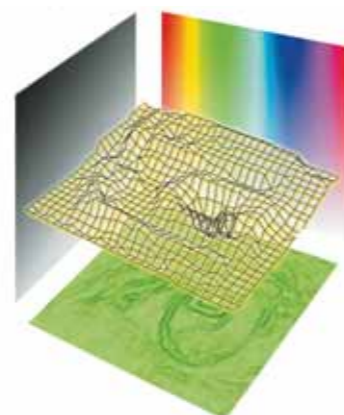


making
complex
publishing
simple

Only ProImage OnColor has the capability to improve every image at the speed to beat any deadline...

Multi-Dimensional Processing (MDP) technology automatically analyses tonal color and spatial characteristics in every image, then calculates and applies the necessary corrections for optimum reproduction.

- ProImage OnColor eliminates the need to sort images before processing.
- Professional color conversion, JPEG compression adjustment, descreening resolution enhancement, and noise reduction.
- Multi-script processing for any image
- Users AppleScripts for better workflow flexibility and integration
- Integrates seamlessly into operator-controlled, semi-automatic, or fully automated workflows.
- Automation capabilities include XML command from page make-up systems to further automate the whole quality process.
- Retrieves and saves in a variety of file formats.
- Easy to use "Compare" feature lets you Approve or Reject the processed image.
- Interactive edit allows operators to make any final correction they may wish to as an integral part of ProImage OnColor, while comparing the result with the original image.
- PDF options allows automatic enhancement of all images inside a PDF file.



Multi-Dimensional Processing (MDP) Technology

The secret that ProImage OnColor the outstanding solution. And the brains behind the interface. MDP is the culmination of expertise in analogue and digital image capture, photographic and raster image processing, screening technology, color management and image output.

Intelligent Analysis...

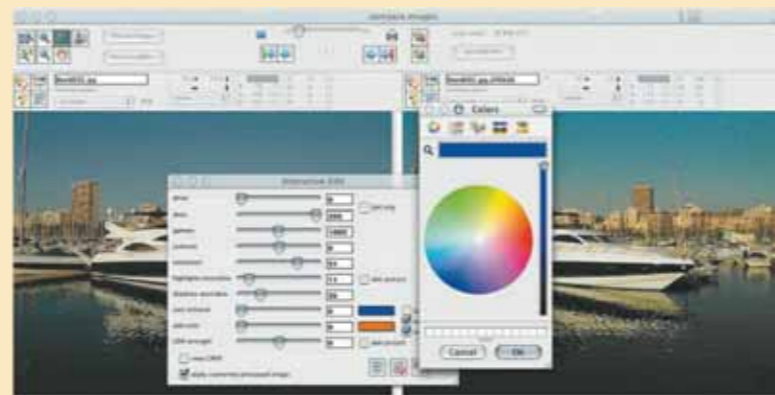
MDP analyses spatial quality and geometry, as well as tonal characteristics and color values. That means that the mapping software can identify skin tones, for example, by the geometry of the human face in addition to the color and tonal values of the skin. The software uses frequency data to identify areas of significant content concentration. With this information the software can point to a spot where sharpening was previously applied, for instance, to prevent excessive sharpening.

Intelligent tuning...

Next, MDP combine the color, tonal and spatial data to calculate the adjustments needed for optimal image reproduction. By doing so, the integrity of the original image is never sacrificed. So if, instance, an image requires a boost in a color saturation, the shadow and highlight detail remains intact.

It also takes previous sharpening into account and adds only what may be needed to achieve the level of overall sharpening set in the parameters.

Finally, based on these calculations, MDP tunes the image to achieve consistent high-quality output.



High level of productivity...

MDP gives you automated intelligence. That means you get all the benefits of individual image processing at a speed that surpasses any batch-processing program on the market. There's no need to pre-sort, predefine or pre-batch. MDP does all the thinking for you.

Seamless Interfacing

ProImage OnColor has unlimited scope for interfacing, Firstly, there is an expanded AppleScript facility to allow custom-made workflows to be constructed easily. There are example scripts provided with the software which can facilitate the process of setting up tailor-made workflows. There is also an interface where third-party applications, such as page make-up systems, can receive XML commands to perform actions such as cropping, rotation, resizing and running custom scripts automatically. With this, ProImage OnColor can provide seamless integration with a multitude of external systems.

PDF options:

Proimage OnColor provides an option which can work with PDF files.

In automatic mode, every image inside the PDF file is automatically enhanced and enriched, and the PDF file on output can be sent directly to the workflow.

There is also an interactive mode which allow "before and after" comparisons of each image within the PDF file, and use of the interactive edit facility for any final touching-up that may be wanted. PDF option provides the facility to replace images and crop them subject to reaming the same aspect ratio.

This allows ProImage OnColor to work with images and pages which have been provided in PDF format by the supplier, or to simply work on the output of a page make-up system, or even on print site.

ProImage OnColor also offers a Restore Dynamic Range function. This allows CMYK files with a reduced color gamut to be sent to ProImage OnColor which will still produce high quality output.

